



WALKTHROUGH GUIDE #501

Sony Digital Voice Recorder & Dragon NaturallySpeaking® version 9

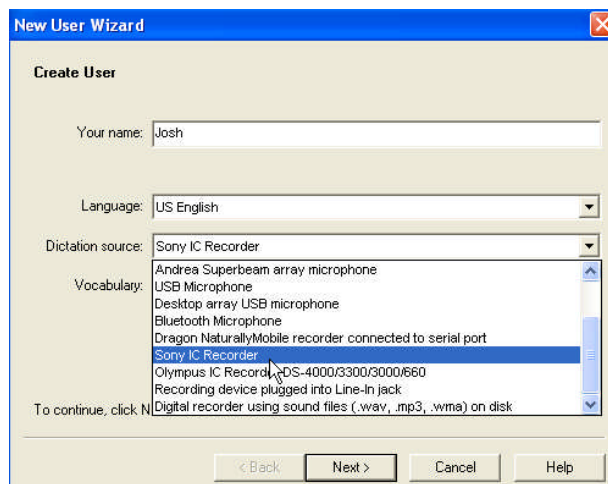
This set-up guide walks you through the process of creating a Sony digital voice recorder profile within Dragon NaturallySpeaking® version 9. Illustrated screen shots have been included for your convenience.

Step 1: Preparing the Sony Digital Voice Recorder

1. Many of the Sony digital voice recorders have 4 recording modes. Set the recorder to ST mode. The ST mode has the highest sampling rate [44.1kHz] therefore, it will provide the best accuracy.
2. There are two microphone sensitivity modes, make sure it's set to dictation mode. This can be done through the recorders menu options.
3. Install the Sony Digital Voice Editor software before creating your profile within Dragon NaturallySpeaking®. After installing the Sony software, make sure you have the latest version. Go to Help/About Digital Voice Editor, this will display your release number. The latest release 3.1, if you do not have this patch; go to <http://www.sonystyle.com> for a free download.

Step 2: Creating your Sony profile in Dragon NaturallySpeaking® version 9

1. Open Dragon NaturallySpeaking®. On the DragonBar, select [**NaturallySpeaking**] then [**Open User**]. The Open User dialog box will open. Select [**Next**]. The following New User Wizard box will appear. Enter your name and select your preferred language. In the Dictation Source, select Sony IC Recorder as seen below.



! If you already have a primary speech profile set up, check the Dragon NaturallySpeaking® user manual on ‘Adding a Dictation Source’. We recommend adding an additional dictation source rather than creating a brand new one.

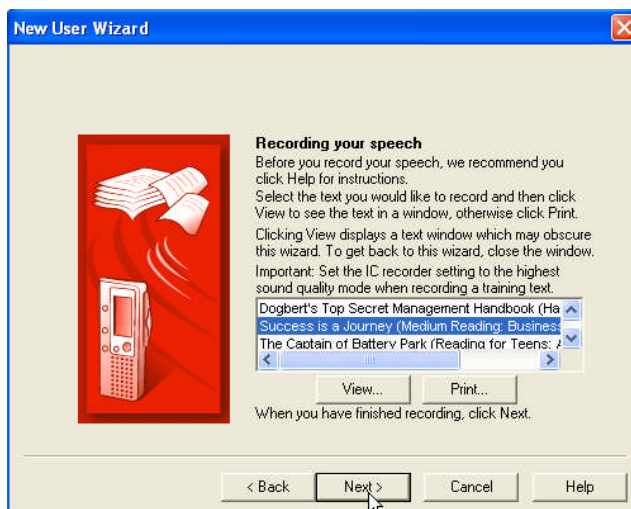
2. After clicking [Next], you will be re-directed to the New User Wizard. This is a 3 step process: 1. Record your speech 2. Transfer your recorded speech to your computer 3. Let Dragon NaturallySpeaking® adapt to your user. * Please be sure to follow the listed instructions above in the ‘Preparing the Recorder’ section before proceeding



! Your dictation should be at least 16 minutes in length. During the initial training, do not dictate punctuation.

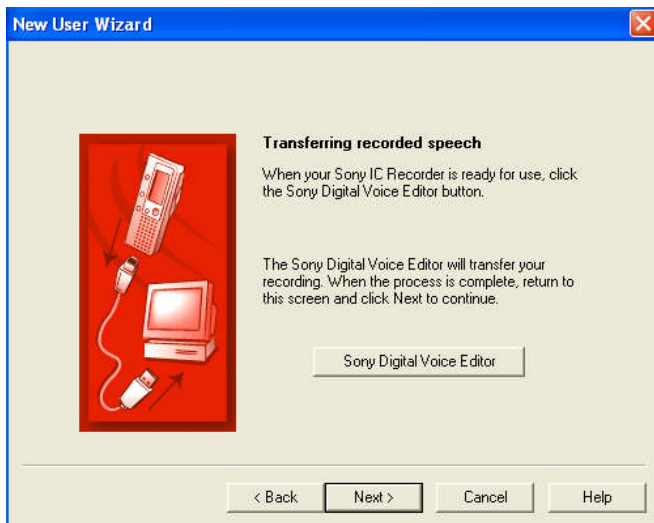
Step 3: Recording your Speech

1. Click [Next], you will be prompted to select a reading. You will have the options of reading directly from your PC or printing the story of your choice.

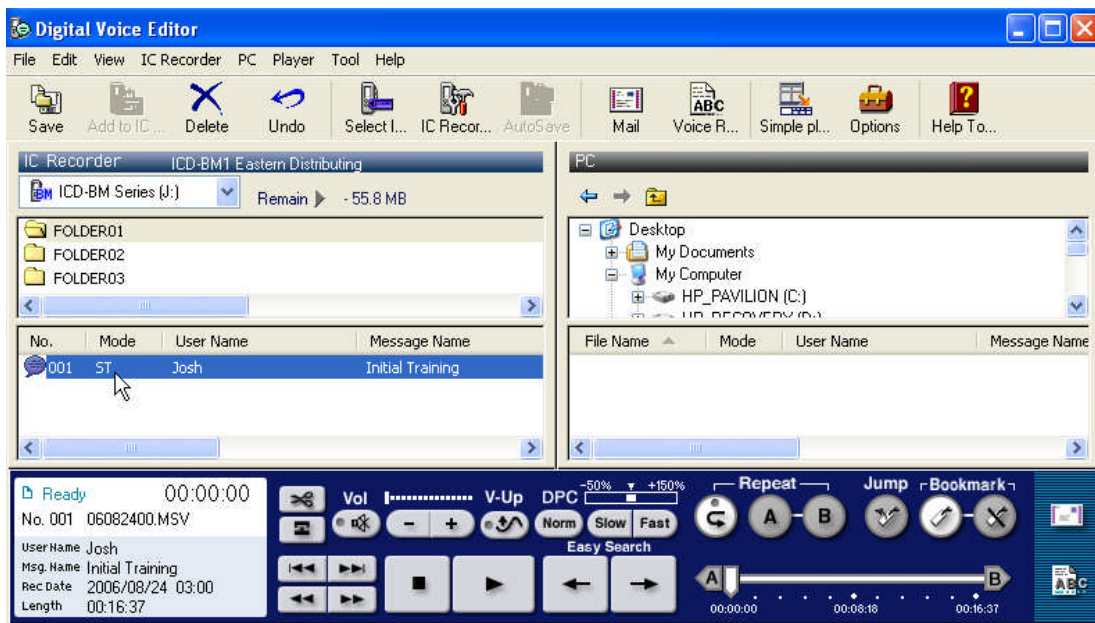



Step 4: Transfer your recorded speech to your computer

1. After reading into the recorder, it's time to transfer your dictation, click [Next]. The following window will appear:



2. Connect your Sony recorder to your computer through the USB port or through a card reader (not included in package). Once connected; click on the 'Sony Digital Voice Editor' tab. The Sony digital voice editor software will automatically launch.



4. Select the recorded training, click the  icon.

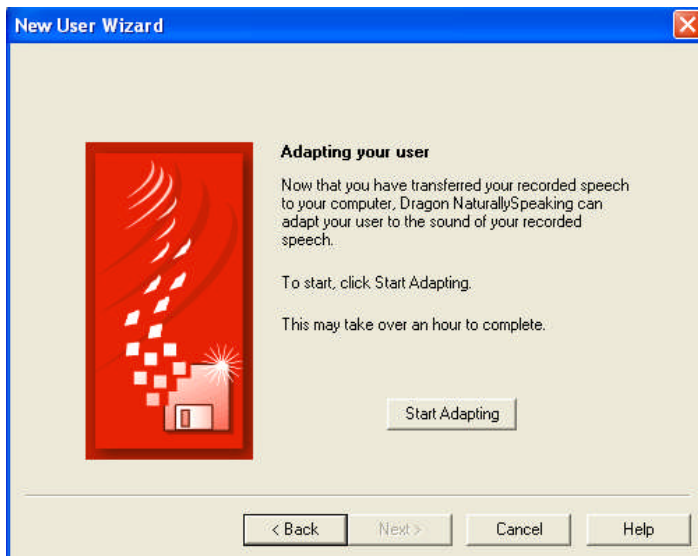
Step 5: Let Dragon NaturallySpeaking® adapt your user

1. You will be returned to the Dragon New User dialog box. Click [Next], the following window will appear:



! Verify that your Audio quality check has PASSED

2. Click [Next], the window will open.



3. Start Adapting & Congratulations, you've completed the mobile training process.